

FEBRUARY NEWS

This newsletter is posted on the website:
www.woodmanseyprimary.school

From the website it is possible to click on the **SCHOOL BLOG** which is an online photographic diary of life at the school.



An Invitation to Cruise Around the Caribbean

Dear Parents, Carers, Governors, Friends, Staff and Pupils

As many of you will know the pressure for children to perform in Maths and English increases year on year. Whilst achievement in these subjects are important, enriching and inspiring children to achieve in other areas of the curriculum is vital too. Geography and History must be taught in a way where children feel immersed in culture and traditions. As a staff team we really believe this is how we make learning meaningful and memorable.

Those of you who were with us last year will remember our international festival took us to the European Union. During the international week the children focussed on European countries through Dance, History, Food, Art and of course Geography.

This year I am thrilled to announce we will be taking to the seas and visiting

various Caribbean islands during the extended time of 4th - 14th February. Foundation Stage will look at 'going on a cruise' and island hopping, Years 1/2 will visit Trinidad & Tobago and Barbados, Years 3/4 will study Jamaica and the Bahamas and Years 5/6 will focus on Cuba and Saint Lucia.

Each child will bring home a passport on Friday 1st February where a photo can be added and the personal details page filled out, ready to return to school on Monday 4th. During the International Festival children will use their passport to visit the other countries (classes) to learn about that country and record what they notice. The afternoons will be rich with learning about other cultures, religions and countries.

To end the project we would like to open the school doors to you at **3pm - 5pm on Thursday 14th February** to come and walk through the school

where you will be able to see the work the children have produced. Caribbean Stew, Salsa lessons, Animal Spotting, Treasure hunts and 100m sprints are only a few of the activities we invite you to take part in. At 3pm the children will open the school with a parade of colour and music which we really hope as many of you can attend as possible. We hope the family and friends can join us for this International open evening - passports and luggage allowance not necessary!

Due to the extra costs of putting on events such as these, which really do enhance the curriculum, we are asking for donations of £3 a child. This covers ingredients, art resources, and transport to and from Molescroft to use their pupil kitchen (dates to follow). Please use the form at the end of the newsletter to send in any donations. Many thanks as always.

More on THE CARIBBEAN

Continued from page 1.

All children will get the chance to focus on specific arts and cultural aspects including the following:

All children will be engaging in some Salsa Dance Moves with Mrs Scott. There will be a Geography Workshop for every year group led by Mr. Williams, a Geography subject leader from Molescroft.

There is to be a special Carnival Day in which all pupils will make a headdress based on one of their islands to wear on the opening ceremony.

Each class will have a Cooking Experience making their own "Family Meal" based on a Jamaican Recipe which we will travel to Molescroft Primary for.

As always culturally linked art projects will provide a major focus. They are as follows:

FY: Carnival Mask making.

Year 1/2: Working with textiles and withies to create a coral reef.

Year 3/4: Withie: work creating Rainforest animals from the Caribbean regions.

Year 5/6: Mixed Media: Cuban culture and colour

As always everyone is invited to the celebrated International Evening. on **Thursday 14th February 2019**. The school is to be presented on the Festival Evening as a Cruise Ship and the classrooms will be the different islands to visit.

The hall is to be the hub of the cruise ship with the Starlight Lounge. There will be tables and chairs in the Starlight Lounge at which guests can drink and eat. A bar will be serving mocktails. There will also be the chance to join in with Salsa lessons with Mrs Scott and your children.

Past 3.30pm (unless children are booked in for after-school club) children MUST be accompanied by an adult for the event.

WHAT TO WEAR

This year we would just like to invite everyone to wear as bright and flamboyant clothing as possible. For the opening carnival, the children will wear their headdresses, so it would be wonderful if they could wear a bright shirt, skirt or dress, over layers to keep them warm.

Basically anything goes, but the brighter the better. The children will know the colour scheme of their headdress if they WISH to coordinate.



In addition on the Festival Night itself, our very talented chef, Mrs Barber will be offering *Caribbean rice and peas* for just £2 per meal.



Unfortunately for the festival, we cannot open the playground for additional parking as, weather permitting we are planning on using the space for activities and for the start of the parade.

Please use the Warton Arms Pub car-park for parking to avoid blocking driveways and private roads. Parking in the bus stop is also not permitted. The school car park will be locked at 2.55pm.

SNOW POLICY: IMPORTANT

The following is taken from the school's Safeguarding Policy and should prepare parents/carers for what to expect when it snows.

The school will only close without prior notice as a last resort. The Head of School or her representative will remain on site until the last child is collected.

Policy in Practice **What the school does to assist in the event of icy weather conditions.**

It is not practical to grit the entire site, but as part of the gritting policy, safe routes round the site and across the Playground have been identified and will be gritted before giving access to the site, thereby minimising the risks to children parents and visitors. The car park will also be gritted.

Children are not allowed to make slides on the playgrounds. Playgrounds are gritted if practical before 8:30am and when not, by morning break. At playtimes a decision as to whether children are to be allowed outside will be made by the senior teacher on duty in conjunction with the Head of School.

Children may not throw snowballs on the playgrounds. However if the field is covered by thick snow pupils may be allowed to play on the field in the snow, make snowman and throw snowballs. Those not wishing to throw snow (or indeed be hit by snowballs) should stay on the playgrounds. The school believes that playing in and throwing snow is part of a child's life experiences.

In extreme cases the Executive Headteacher may decide that there is no option but to close the school if there is presented a severe health and safety risk.

This done, the Chair of Governors will be informed and parents via text message. A severe Health and Safety Risk would be presented if insufficient staff could reach the school or indeed the health and safety of staff meant that they should leave early. Due to the location of the school it is expected that the school will be able to remain open. Closing a school at short notice including closing mid way through a day poses considerable difficulties for parents and will only be taken as a very last resort.

A complete heating failure in the winter and/or a loss of the water supply would however result in the school having to close.

Good communication is essential. Parents receive a copy of specific instructions during the autumn and winter months via the monthly newsletters and the website. Children have the processes explained to them in the classroom. It is expected that parents adhere to these instructions and pass all relevant information to friends and relatives who may also come to school to bring and fetch children. Parents/Carers are asked to be responsible and plan more time for their journey, suitable footwear for having to walk further, wrapping up to keep warm etc....Parents should not expect to be able to park close to the school at these times! Parents and visitors are expected to use the gritted paths rather than walk across the snow and ice.

Snow Policy and Procedures - information for teaching and support staff

In the event of disruption caused by heavy snow the prime concern of the school must always be the safety of the pupils and staff.

It is expected that all staff will make every reasonable effort to undertake the journey to school. It is appreciated that the journey may take longer than normal and therefore some staff may not be able to arrive before the normal start of school time.



The school will only close without prior notice as a last resort. The Head of School or her representative will remain on site until the last child is collected.

In the event of severe weather, a decision to close the school for day pupils will be made by 7am. The Head of School will contact Radio Humberside and Viking Radio to ask them to broadcast the information.

PARENTS WILL BE INFORMED BY TEXT IF THE SCHOOL IS TO CLOSE.

Updates will be posted on the Twitter Feed - @WoodmanseyPS which can be found on the homepage of the school website: www.woodmanseyprimary.school

In the event of the normal timetable being suspended, a programme of activities will be organised for pupils who arrive at school. Teachers and Teaching Assistants will be delegated to supervise these activities.

Rather than a full closure it is more likely that the school will remain open on a reduced capacity. In such an event, parents/carers will be asked if it is possible to make alternative arrangements for pupils. Where this is not possible the school will remain open for those who need to come to school or for those who cannot go home in the case of an unexpected early closure. As the number pupils remaining decreases, they will be moved to other classes or the hall.

There is nothing like a cold January to lead us to thoughts of Summer Holidays. The following advice reminds parents of their responsibilities and the impact of taking holiday's in term time.

Family holidays/school holidays

Children have 13 weeks annual holiday from school and school holiday dates are published well in advance. As such, all parents/carers are expected wherever possible to plan and take their family holidays at this time so as not to disrupt their children's education. Education law states that parents do not have a right to take their child out of school for a holiday during term time. Only in exceptional circumstances may a headteacher grant permission for leave; and it is the headteachers decision on whether the absence is exceptional and how many days to approve. This decision is taken under the guidelines and very limited criteria set out by the Local Authority.

Further information can be found on the school website, in the Attendance Policy.

<https://woodmanseyprimary.school/overarching-policies/>

Parents/carers who take their child out of school without the absence being agreed and authorised by written permission from the school can be issued with a penalty fine.

Why is high attendance important to my child's education?

As a parent/carer you want the best for your children. Having a good education is an important factor in opening up more opportunities in adult life. Did you know that:

- a child who is absent a day of school per week misses an equivalent of two years of their school life
- a child with 90% attendance every year, will by the end of Year 9, have missed one full year of schooling. This is why when children's attendance drops below 90% the school and or Educational Welfare Officer will make contact.
- 90% of young people with absence rates below 85% fail to achieve five or more good grades of GCSE and around one third achieve no GCSEs at all
- poor examination results limit young people's options and poor attendance suggests to colleges and employers that these students are unreliable
- 7.5 million school days are missed each year through unauthorised absence.

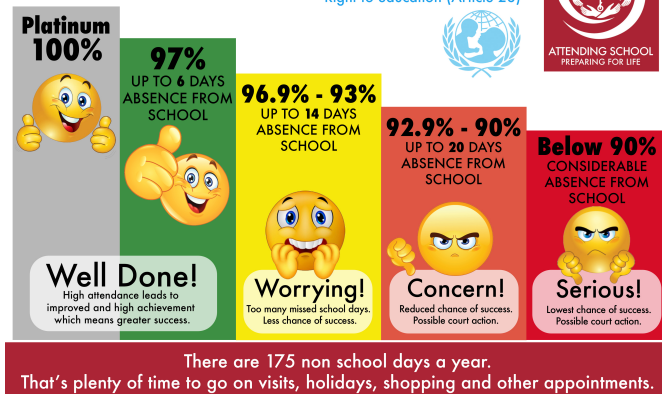
GCSEs may seem a long way off for you and your child but all absence at any stage leads to gaps in your child's learning. This in turn can:

- mean that they fall behind in work
- affect their motivation
- affect their enjoyment of learning
- lead to poor behaviour
- affect their desire to attend school regularly
- affect their confidence in school
- mean they miss out on the social life of school and extra curricular opportunities and experiences
- affect their ability to have or keep friendships.



WHAT IS YOUR ATTENDANCE?

Right to education (Article 28)



Responsibilities as a parent

By law, all children of compulsory school age (normally five to 16) must receive a suitable full-time education. As a parent, you have a legal responsibility to make sure this happens – either by registering your child at a school or by making other arrangements to give them a suitable, full-time education. Once your child is registered at a school, you are legally responsible for making sure they attend regularly. This means your child should not have sessions of unauthorised absence.

Section 576 of the Education Act 1996 defines parent as:

- all natural parents, whether they are married or not;
- any person who, although not a natural parent, has parental responsibility for a child or young person;
- any person who, although not a natural parent, has care of a child or young person.

Having care of a child or young person means that a person with whom the child lives and who looks after the child, irrespective of what their relationship is with the child, is considered to be a parent in education law.



PLEASE PIN THIS PAGE TO YOUR HOUSEHOLD NOTICEBOARD

January

Wed 23rd Official launch of International Festival
Tues 29th Year 5/6 Basketball Competition, 4pm, Beverley Grammar School
Thurs 31st Governors' Safeguarding, Health & Safety & Premises Committee
5.30pm
Governors' Finance & Personnel Committee 6.30pm

February

Fri 1st FSU Stay and Play - sign up with Ms Eastwood
Sun 3rd 50th Anniversary for Christingle, Beverley Minster 10.30am - All welcome
Mon 4th International Fortnight
Wed 6th Y1/2 to visit Molescroft Primary to use pupil kitchen 9am-12pm
Thurs 7th Y3-6 to visit Molescroft Primary to use pupil kitchen 9am - 12pm
Year 5/6 Secondary Transition Presentation
Thurs 14th International Festival 3.00pm - 5pm - All welcome
Tues 12th KS2 Theatre Club visit to see 'The Worst Witch' - Hull New Theatre,
6.40pm
Fri 15th Break up for Half Term
Mon 25th School Re-opens

March

Mon 4th German Students visiting to share their 'Life in a Box' with Y5/6
Tues 5th Bikeability training for Y5/6

Yours sincerely,

B Nicholls
Head of School

CARIBBEAN INTERNATIONAL FESTIVAL

Parents/Carers please return this form to school
PLEASE REFER TO THE FEBRUARY NEWSLETTER FOR DETAILS

Name of child(ren)	_____	Year Group	_____
	_____		_____
	_____		_____
	_____		_____

I am able/unable* to pay £3 per child towards the cost of the CARIBBEAN International Workshops, activities and facilities for my child(ren).

(Those in receipt of income related benefits can claim remissions from the school)

I enclose £ _____ towards the cost of this year's International Festival.

Please make cheques payable to Woodmansey CE Primary School.

Signed _____ Parent / Carer

* Please delete as appropriate

Thank you for your support, without it we cannot continue to offer these amazing extra activities and events.

Together we seek to unlock the potential of every child.

Mrs. B Nicholls
Head of School