

# MARCH NEWS

This newsletter is posted on the website:  
[www.woodmanseyprimary.school](http://www.woodmanseyprimary.school)

From the website it is possible to click on the **SCHOOL BLOG** which is an online photographic diary of life at the school.



## Conquering the Caribbean

### Dear Parents, Carers, Governors, Friends, Staff and Pupils

February was packed full of exciting experiences for the children and staff and the sound of Caribbean calypso hasn't disappeared yet as the children are still talking about the activities they enjoyed during the International Fortnight.

It was so lovely to see so many families and supporters of the school at our opening ceremony on Thursday 14th. The school was fit to burst and I know many of you enjoyed lounging in the starlight lounge with a mocktail for at least an hour! Developing annual events such as these are so important and I even had one family ask me about the destination for next year!

Many of you will have read the SIAMS report which went home this week, and thank you for all your kind comments. This was of course an added element to our international

festival but the inspector was blown away with the dedication, enthusiasm and talent of the children. The SIAMS report alongside our last Ofsted report are documents to be proud of, for we know that the Woodmansey children work so hard and deserve each and every success.

In a blink of an eye we have arrived in March and with the recent warmer weather it feels as though Spring is on its way.

March is also the time which I will begin my maternity leave. My last day in school will be Friday 15th March and from Monday 18th March Mrs. Sarah Grainger will take up the position as Acting Head of School. Mrs. Grainger has met all the staff and governors and is looking forward to meeting all the children this week as she starts her handover visits.

Please do come and introduce yourself if you see her, she is eager to get to know you all over the next coming weeks.

I have promised the children that I will pop in from time to time to see how they are all getting on and will hopefully be available to share the key celebrations in the year with you all.

I'd like to take this opportunity to thank each of you for your support this past 18 months. Your warmth and willingness to embrace lots of new changes has been overwhelming and is so appreciated. I know Mrs. Grainger is in good hands and I know that she is looking forward to steering the Woodmansey ship in my absence.

Warmest of Wishes,

Mrs. B Nicholls

## NEW UNIFORM

From the 1st March the new style uniform can be purchased from the school office. There is no expectation that new uniform will be bought straight away, please feel free to run down your current stock at home before buying new, however if you wish to do so, school jumpers, cardigans, golden yellow and white polo shirts and new style dispatch book bags can be purchased from 3.15pm on the 1st. Children must wear a school cardigan or jumper with school logo but a plain white polo can be worn.



Cardigans, jumpers, golden yellow and white polo shirts are all unisex and can be ordered from the school office.

## PARKING

We have once again received complaints from nearby residents about people from the school parking across driveways, in the bus stop or opposite Mr Pang during the crossing patrol hours. I urge you to consider your parking arrangements. Consider if it would be possible to leave a few minutes earlier so you can park away from the school site and walk the remainder. Remember The Warton Arms are very happy for the school community to use their car park for school drop off and collection.

Residents have contacted the traffic wardens and the police to carry out spot checks on the parking of certain vehicles at peak times of the school day. I would hate for any of you to be ticketed so please think carefully about where you park your car.

The parking decisions the school has made are to safeguard your children, ensuring they have a safe pathway to and from school. Please work with us. Only the other day, the bus could not access the bus stop because of a parked car so had to stop on the road, meaning traffic had to manoeuvre onto the opposite side of the road to get passed, putting drivers and Mr Pang in danger as he could not be seen.

Lastly, please also consider the speed in which drivers enter and leave our school car park, there may be still children leaving the site and walking back to their car. I have seen on a few occasions now drivers turning into our car park too quickly, narrowly missing children.

I know the location of our school site is not ideal for parking but this makes it even more important that we work together to protect our school community from the busy road and moving cars.





**There is nothing like a cold January to lead us to thoughts of Summer Holidays. The following advice reminds parents of their responsibilities and the impact of taking holiday's in term time.**

## Family holidays/school holidays

Children have 13 weeks annual holiday from school and school holiday dates are published well in advance. As such, all parents/carers are expected wherever possible to plan and take their family holidays at this time so as not to disrupt their children's education. Education law states that parents do not have a right to take their child out of school for a holiday during term time. Only in exceptional circumstances may a headteacher grant permission for leave; and it is the headteachers decision on whether the absence is exceptional and how many days to approve. This decision is taken under the guidelines and very limited criteria set out by the Local Authority.

Further information can be found on the school website, in the Attendance Policy.

<https://woodmanseyprimary.school/overarching-policies/>

Parents/carers who take their child out of school without the absence being agreed and authorised by written permission from the school can be issued with a penalty fine.

## Why is high attendance important to my child's education?

As a parent/carer you want the best for your children. Having a good education is an important factor in opening up more opportunities in adult life. Did you know that:

- a child who is absent a day of school per week misses an equivalent of two years of their school life
- a child with 90% attendance every year, will by the end of Year 9, have missed one full year of schooling. This is why when children's attendance drops below 90% the school and or Educational Welfare Officer will make contact.
- 90% of young people with absence rates below 85% fail to achieve five or more good grades of GCSE and around one third achieve no GCSEs at all
- poor examination results limit young people's options and poor attendance suggests to colleges and employers that these students are unreliable
- 7.5 million school days are missed each year through unauthorised absence.

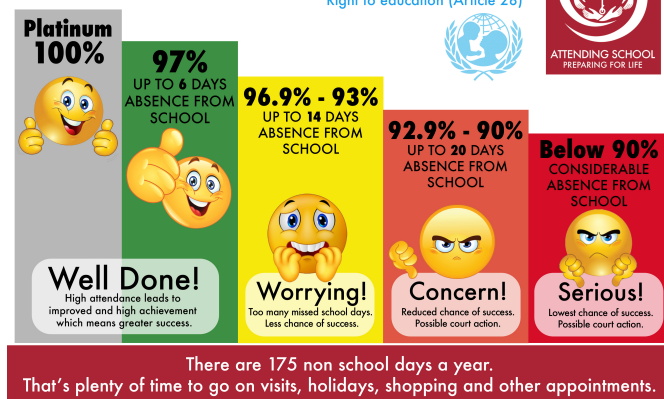
GCSEs may seem a long way off for you and your child but all absence at any stage leads to gaps in your child's learning. This in turn can:

- mean that they fall behind in work
- affect their motivation
- affect their enjoyment of learning
- lead to poor behaviour
- affect their desire to attend school regularly
- affect their confidence in school
- mean they miss out on the social life of school and extra curricular opportunities and experiences
- affect their ability to have or keep friendships.



## WHAT IS YOUR ATTENDANCE?

Right to education (Article 28)



## Responsibilities as a parent

By law, all children of compulsory school age (normally five to 16) must receive a suitable full-time education. As a parent, you have a legal responsibility to make sure this happens – either by registering your child at a school or by making other arrangements to give them a suitable, full-time education. Once your child is registered at a school, you are legally responsible for making sure they attend regularly. This means your child should not have sessions of unauthorised absence.

Section 576 of the Education Act 1996 defines parent as:

- all natural parents, whether they are married or not;
- any person who, although not a natural parent, has parental responsibility for a child or young person;
- any person who, although not a natural parent, has care of a child or young person.

Having care of a child or young person means that a person with whom the child lives and who looks after the child, irrespective of what their relationship is with the child, is considered to be a parent in education law.



## PLEASE PIN THIS PAGE TO YOUR HOUSEHOLD NOTICEBOARD

### March

Mon 4th	German Students visiting to share their 'Life in a Box' with Y5/6
Tues 5th	Bikeability training for Y5/6
Mon 25th	KS1 SATS materials being delivered this week
Fri 29th	Brexit Day

### April

Mon 1st	Easter Garden in worship (Please send in a plant or flowering bulbs for us to display, then re-plant in our grounds.)
	Consultation Evening - letters will be sent out make an appointment
Tues 2nd	Year 2 Cricket Competition, Beverley Cricket Club 9am-12pm
	KS2 Orienteering Competition, Beverley Grammar School 4pm-6pm
Fri 5th	Easter Service, St Peter's Church, 2pm - All welcome
	School Closes for Easter Holiday, 3.30pm
Mon 22nd	Easter Monday - School Closed
Tues 23rd	School re-opens
Thurs 25th	Curriculum and Quality Assurance Governor Meeting, 5.30pm

Yours sincerely,

B Nicholls  
Head of School



# GOVERNOR NEWS

As you may know, Woodmansey CE Primary has not only been through some leadership changes but the Governing Body has seen big changes over the last couple of years. It is important that as parents and carers you are aware of the people within the team that governs the school and what their role is. Governance has taken a different direction in recent years but essentially they are to:

- ensure the school continues to raise standards
- ensure clarity of vision, ethos and strategic direction
- holding executive leaders to account for the educational performance of the organisation and its pupils, and the performance management of staff
- overseeing the financial performance of the organisation and making sure its money is well spent.

Over this academic year we hope to provide you with a Governor biography for each governor so you can get to know their faces and understand their role within the governing body.



## **Mrs. Sarah Grainger** **Acting Head of School**

As the latest edition to the Woodmansey team, I'm delighted to introduce myself. I'm Sarah Grainger, and I have the privilege of acting Head of School while Bethan is on maternity leave.

Born in Inverness, I spent a very happy childhood and adolescence living just north of Glasgow before moving to Aberdeen to study for a Masters Degree in English Literature. It was whilst in Aberdeen, I discovered what was to become my lifelong passion for working with young people and I spent many years working for a charity that supported children with profound disabilities and challenging behaviour.

Subsequently, I worked for another charity, this time supporting people affected by homelessness, alcohol and drug dependencies. After successfully completing two years Post Graduate training in Social Work, I worked for six years at a residential school for children with Autism and severe behavioural difficulties as the Behavioural Support Manager.

In 2007 my partner and I left Aberdeen and moved south to Beverley. Retraining as a Primary Teacher, I've spent the last ten years at Molescroft Primary School teaching across both key stages and becoming a Specialist Leader in Education. Work aside, our little boy Seth (who's almost five now), must be included as one of my proudest achievements. When not being a mum, partner or teacher I spend the time that I can cycling, swimming and catching what's on at the East Riding Theatre. I'm delighted to be joining the Woodmansey team and look forward immensely to my time at the school.