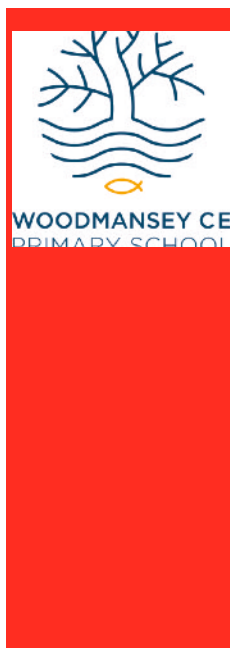


DECEMBER NEWS



A Woodmansey Wish for Christmas

Dear Parents, Carers, Governors, Friends, Staff and Pupils

This Friday will see the launch of our Christmas Season for our pupils (and staff!) I am hopeful that we shall be able to offer as much of what we normally do as possible in a Covid Secure manner.

This Friday morning, the children will enjoy the annual tradition of the **Christmas Tree Assembly**. It is an hour and a half of magical cosiness, wrapped around a new story written by Mr Lancaster every year, to mark the decoration of the Christmas tree and the start of the school's festive preparations. It is always hugely looked forward to by children and staff and it is seen as a gift to them, one and all. It takes a considerable amount of time and preparation, all done out of school hours. This year it has all been pre-filmed and will be watched in classrooms from 9:30am. **For the first time ever,**

this normally closed event will be shared with everyone via a link and the website. For once, everyone can see what all the fuss is about!

I know how much Christmas experiences at Primary School define memories for parents and children alike, so we are all determined to ensure that they will continue to be made, even in a world in Lockdown. Arrangements are obviously subject to change, delay or even cancellation particularly if "Bubbles" and/or staff are in isolation or quarantine. Every day has the possibility to change the direction of our focus at very little notice. Our wish is that we are able to send our Christmas cheer to as many in our community as possible.

EYFS and KS1 are preparing for their nativity 'It's a Baby' which will be pre-recorded on 8th

December and a link sent out to you on Friday 11th.

Years 3-6 are busy rehearsing their Christmas album which will be available to download in the final week of term.

In the run up to the Christmas Holiday, I urge parents to continue to adhere to social distancing, particularly when walking to, and from school. Bubble closures are still very much a possibility which of course will have an impact on our whole community, particularly at Christmas time.

I also want to pass on my thanks to all of you, for your kind words of support and understanding in what is a busy and difficult time for schools at the moment. As ever, you keep us all buoyant by bringing your wonderful children to school every day. Thank you.

THE GARDEN FAMILY

Spreading some Christmas joy.

Karen Simpkin, (Grandma to Jack and Luke) wrote to me, sharing what began as some Lockdown fun and has grown and grown, even travelling far and wide on Social Media!

Karen made a mannequin family which sat in her garden for 54 days with each day performing a new activity. Many families included the front lawn into their daily exercise so they could see what 'The Garden Family' were getting up to.

As a result, Karen has written a book to accompany 'The Garden Family' which Karen has

gifted to the school which will be shared with all the children in the school. All proceeds of the book will go to Emmaus Hull & East Riding.

The Garden Family will, however, make a return for the festive period: Saturday 19th, Provisionally, Christmas Eve, Christmas Day, Boxing Day and New Year's Day.

The 'family' will be out in the lawn from 10am until 5pm at 1 Bielby Drive, Beverley. Photos will be uploaded on their Facebook page.

<https://www.facebook.com/The-Garden-Family-102621411662452/>

THIS IS SERIOUS

Consider what isolation at Christmas would mean.

We were all pleased to have got to the this point without having to close a bubble and without a child or member of staff testing positive for Covid 19.

Obviously as the incidence of the virus increases in the area, the likelihood of a bubble closing becomes even more likely. The implications for the children of course could be that this will overlap with their Christmas Party Days or the Christmas Productions.

Despite our shared tiredness with all the regulations, we have shown that we can give the children a full school experience and a full curriculum experience and stay safe.

It remains vital however, that we maintain social distance. **THIS INCLUDES ON THE YELLOW BRICK LINE and while waiting to come on site.** We know this virus can present with no symptoms at all. They didn't know that they had it, you don't know if you have it, or if the person you are standing **too close** to has it.

PLEASE THINK HANDS- FACE - SPACE

Remember if a bubble is closed on or after 12th December it will mean your child will have to be isolated in your home on Christmas Day! Its a sobering thought!

**SOCIAL
DISTANCING IS
DESIGNED TO
STOP THE
SPREAD OF COVID
19**

**This includes at the
entrances to the
school.**

**PLEASE
SPREAD OUT
AND KEEP
BACK FROM
THE GATES**



**Reminder letters
have been sent out
by the Local
Authority - don't
delay!**

STARTING SCHOOL IN 2021?

**The Application Window
is now open.**

Do you have a child aged 3 to 4 years old? Was your child born between September 1, 2016 and August 31, 2017? If so, then he/she should start school in September 2021. You can apply for a school place online NOW using the electronic form on the council's website:

www.eastriding.gov.uk or you can

get an application form from the Admissions Team. Application forms are available now. The deadline for receiving applications is January 15th, 2021. You should make sure that you complete and return an application form online or a paper form to the Admissions Team at County Hall, Beverley by that date. If you have any questions please contact your local school or East Riding of Yorkshire Council: Admissions Team – telephone (01482) 392130



YOU ARE AMAZING!

Charity Fundraising 2020

I have been truly blown away by the ways the children have fund raised this year, and it has been so lovely to see so many families getting involved with the fund raising too - many of you getting on your bikes or dusting off the apron for bake sales.

I haven't seen the final total yet as our final day of term, 'Wear what you like' day is the final push for Macmillan Cancer Care but I know that just by the envelopes coming into school that this years total will be record breaking, so thank you all so very much.

I know that Martin Wood's wife, Zoe, and his two boys are so overwhelmed by your kindness and thoughts in supporting a charity which has supported them through such a hard time. Martin, I know, would have loved all your enthusiasm and fund raising ideas!

The final total will be shared with you all on the final day of term.



MINSTER TREES AT WOODMANSEY!

As has become a tradition in the Woodmansey calendar, Beverley Minster hold their annual Christmas Tree Festival which every year the PTFA sponsor a tree for the Woodmansey children to decorate.

Clearly, this is unable to go ahead this year, however all is not lost! Beverley Minster have very kindly donated the Christmas Tree we would have had in the Minster to decorate and keep on our school grounds, spreading some festive cheer for parents/carers waiting to collect or drop off. We hope to receive delivery soon.

PTFA MEGA RAFFLE

This year, the PTFA's fund raising activities have been severely curtailed but they are able to organise a 'Mega Raffle' (see flyer at the end of the newsletter).

Any items you would like to donate, big or small, please send into school with your child so they can be quarantined before being made into a hamper. We have already had some fabulous donations but please keep them coming!

The hamper will be wrapped and quarantined prior to the winner being announced by the end of term. Raffle tickets will be available for purchase

from November 30th by emailing:
woodmanseyptfa@gmail.com
Tickets are priced at £1.

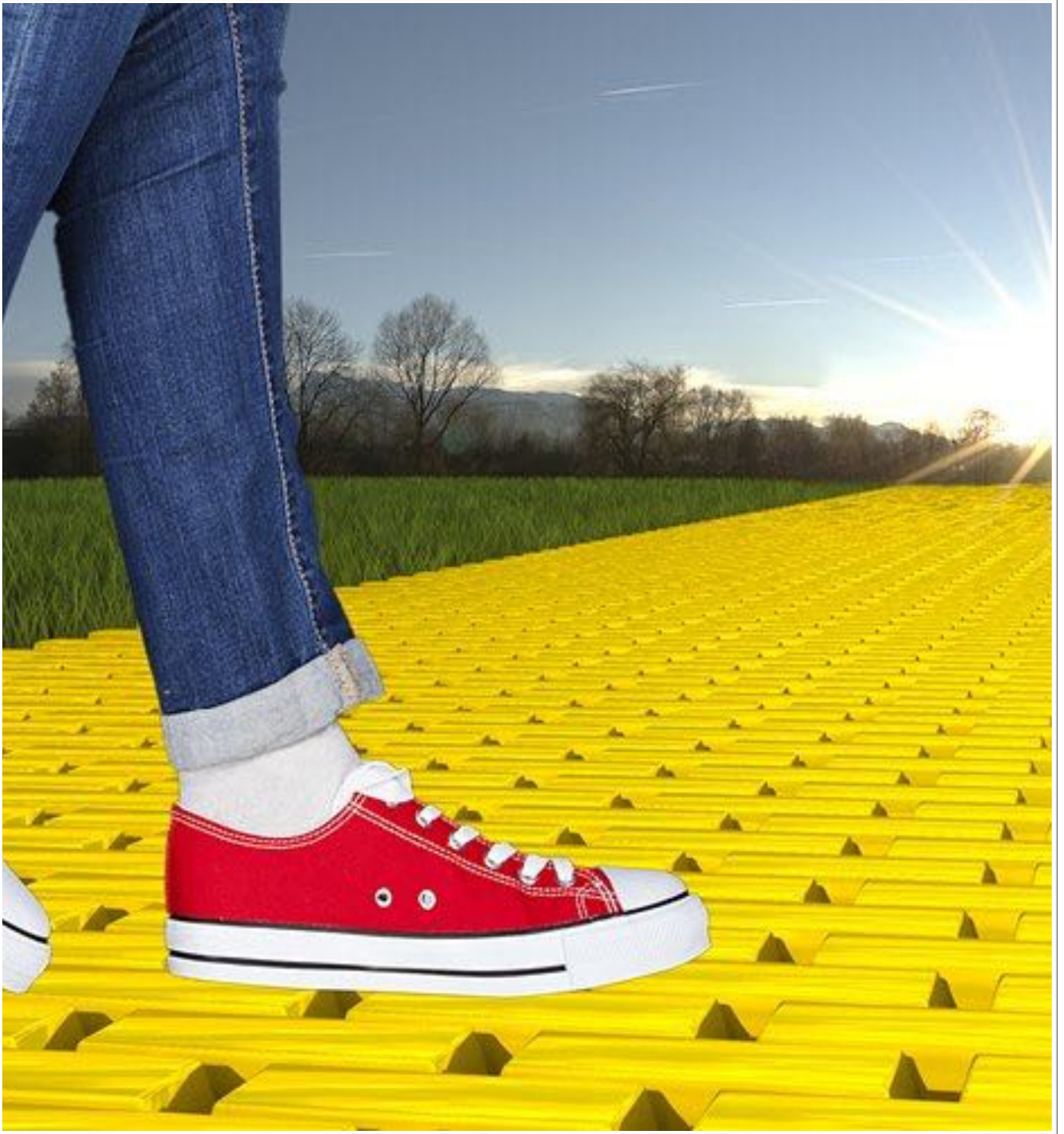
Please do all you can to support the PTFA in these difficult times. Sara Willmore (PTFA chair) can be contacted via the school office.

DRESSING UP FOR CHARITY

The last event of the Charity Campaign

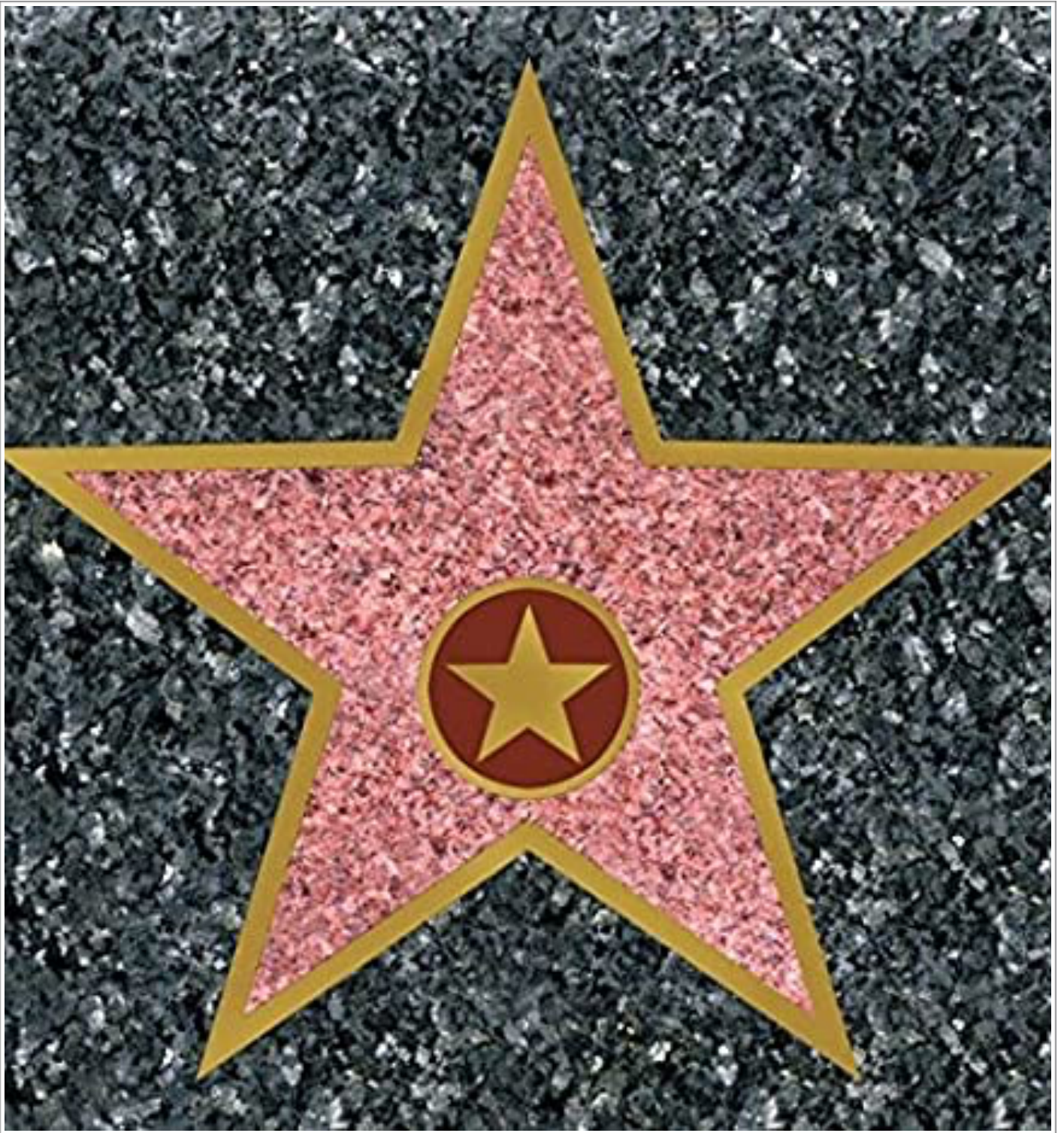
Our final day is a non-uniform day but children may also choose to be more creative and come in fancy dress. The same applies to staff! **The 'fine' for this is £2.** The aim is, as you know to encourage the children to think of those in need and to make some small sacrifice in the terms of time, effort and pocket money. It is not designed as a major assault on parental purses and wallets! Any monies raised will go to Macmillan Cancer Support.





**PLEASE FOLLOW THE
YELLOW PATH ONE WAY
SYSTEM**

Ensuring Social Distancing



**PLEASE STAND ON A STAR
TO COLLECT OR DROP
OFF YOUR LITTLE STAR!**
Ensuring Social Distancing

SNOW POLICY: IMPORTANT

The following is taken from the school's Safeguarding Policy and should prepare parents/carers for what to expect when it snows. Updated for Bubbles.

The school will only close without prior notice as a last resort. The Head of School or her representative will remain on site until the last child is collected.

Policy in Practice

What the school does to assist in the event of icy weather conditions.

It is not practical to grit the entire site, but as part of the gritting policy, safe routes round the site and across the Playground have been identified and will be gritted before giving access to the site, thereby minimising the risks to children parents and visitors. The car park will also be gritted.

Children are not allowed to make slides on the playgrounds. Playgrounds are gritted if practical before 8:30am and when not, by morning break. At playtimes a decision as to whether children are to be allowed outside will be made by the senior teacher on duty in conjunction with the Head of School.

Children may not throw snowballs on the playgrounds. However if the field is covered by thick snow pupils may be allowed to play on the field in the snow, make snowman and throw snowballs. Those not wishing to throw snow (or indeed be hit by snowballs) should stay on the playgrounds. The school believes that playing in and throwing snow is part of a child's life experiences.

In extreme cases the Executive Headteacher may decide that there is no option but to close the school if there is presented a severe health and safety risk. This done, the Chair of Governors and the local radio stations will be informed. A severe Health and Safety Risk would be presented if insufficient staff could reach the school or indeed the health and safety of staff meant that they should leave early. Due to the location of the school it is expected that the school will be able to remain open. Closing a school at short notice including closing mid way through a day poses considerable difficulties for parents and will only be taken as a very last resort.

A complete heating failure in the winter and/or a loss of the water supply would however result in the school having to close.

Good communication is essential. Parents receive a copy of specific instructions during the autumn and winter months via the monthly newsletters and the website. Children have the processes explained to them in the classroom. It is expected that parents adhere to these instructions and pass all relevant information to friends and relatives who may also come to school to bring and fetch children. Parents/Carers are asked to be responsible and plan more time for their journey, suitable footwear for having to walk further, wrapping up to keep warm etc....Parents should not expect to be able to park close to the school at these times! Parents and visitors are expected to use the gritted yellow line continuing to adhere to current Government guidance.

Snow Policy and Procedures - information for teaching and support staff

In the event of disruption caused by heavy snow the prime concern of the school must always be the safety of the pupils and staff.

It is expected that all staff will make every reasonable effort to undertake the journey to school.

It is appreciated that the journey may take longer than normal and therefore some staff may not be able to arrive before the normal start of school time.

The school will only close without prior notice as a last resort. The Head of School or her representative will remain on site until the last child is collected.

In the event of severe weather, a decision to close the school for pupils will be made by 7am. The Head of School will contact Radio Humberside and Viking Radio to ask them to broadcast the information.

PARENTS WILL BE INFORMED BY TEXT IF THE SCHOOL IS TO CLOSE.

Updates will be posted on the Twitter Feed - @WoodmanseyPS

In the event of the normal timetable being suspended, a programme of activities will be organised for pupils who arrive at school. Teachers and Teaching Assistants will be delegated to supervise these activities within their EYFS/KS1 and KS2 bubbles.

Rather than a full closure it is more likely that the school will remain open on a reduced capacity. In such an event, parents/carers will be asked if it is possible to make alternative arrangements for pupils. Where this is not possible the school will remain open for those who need to come to school or for those who cannot go home in the case of an unexpected early closure. As the number pupils remaining decreases, they will be grouped where possible, maintaining the secure bubbles.

Advance Warning

Dates for your diary

Please be aware however that the further ahead into the future dates are, there is a chance that events may have to move due to unforeseen circumstances.

The following dates are all subject to change depending on the national, local or school situation. Advance warning of any change will be given where possible.

January

Mo 4th	Training Day
Tues 5th	School Reopens Staying Safe Week
Thu 14th	Safeguarding, Health & Safety and Premises Committee Meeting 5.30pm Finance & Personnel Committee Meeting 6.30pm
Mo 18th	Mid-year reports published (English & Maths)
Wed 20th	Official launch of our International Festival

February

Sa 6th	Celebrating the Queen's Accession to the throne - 69 years today
Fri 12th	International Festival 3.15pm School Closes for Half Term
Mon 22nd	School re-opens



We will be doing outdoor PE throughout the winter.

PE IN THE WINTER

Keeping warm in outdoor PE for Y1 to Y6

Warm jogging bottoms and tops are probably the most useful. Also it is vital (except the FY currently) that children have a pair of trainers to wear which must not be the pair that they may be wearing in school.

AS WE CANNOT LOAN KIT: IF CHILDREN DO NOT HAVE KIT (after a reminder phone call), WE SHALL PROVIDE A KIT AND WILL HAVE TO CHARGE FOR IT. Just send the kit on a Monday and we will send it home on a Friday.



Cards will need to be in quarantine first.

CHRISTMAS CARDS

There will be no school post box this year.

Should children wish to send Christmas Cards **within their class**. There will be a box in each class where they can be collected and handed out at the start of the next week, following quarantine. **The boxes will be removed after Tuesday 15th December**

for final deliveries on the last day.

I am sorry that we cannot deliver cards to children across bubbles - we will have piles of cards with different quarantine times!

Children must not hand deliver post to each other and reminders about hand washing prior and after handling post will be given.

DIARY



WOODMANSEY CE
PRIMARY SCHOOL

PLEASE PIN THIS PAGE TO YOUR HOUSEHOLD NOTICEBOARD.

**It is with great disappointment that our diary of events is severely curtailed by the ongoing Covid19 Pandemic.
We look forward to the day when our normal programme can be resumed.**

November

Fri 27th Christmas Tree Assembly 9.30am

December

Mo 7th EYFS/KS1 Christmas Dress Rehearsal

Tues 8th EYFS/KS1 Recording (am)

Flu Immunisations (pm)

Th 10th KS2 Christmas Rehearsal

Fr 11th KS2 Christmas Recording

EYFS/KS1 Nativity Link released

Wed 16th Christmas 'Feast of Food & Fun'

Christmas Dinner

Fri 18th Come Dressed As You Like Day - £2 fine for charity

Close for Christmas





P.T.F.A Christmas Mega Raffle

As many of you know, the PTFA have been unable to hold our usual fundraising events this year due to the ongoing pandemic. We have been working hard to come up with alternative ideas (any online based fundraising ideas welcome).

We have decided to hold a raffle for a large food hamper in December, but to achieve this we need everyone's support.

We therefore ask if families feel able to donate an item (or two) to be put in the hamper. It can be anything ranging from tins of soup to chocolates, biscuits, Christmas bits, wine or pop or beauty items.

Please please give generously if you can.

The hamper will be wrapped and quarantined prior to the winner being announced. Raffle tickets will be available for purchase from November 30th by emailing

woodmanseypfta@gmail.com

We, as always, appreciate your support in supporting the school.

Thank you,
Sara Willmore
PTFA Chairperson

